

MPUMALANGA PROVINCIAL GOVERNMENT

Building No. 4
No. 7 Government Boulevard
Riverside Park Extension 2
Nelspruit
1200
South Africa



Private Bag X 11205
Nelspruit, 1200
Tel: 013 766 4564
Fax: 013 766 4604
Int: +27 13 766 4564
Int: +27 13 766 4604
Email: hodfinance@mpg.gov.za

Department of Finance Office of the HOD

Litiko LeteTimali	UmNgango weZeemali	Departement van Finansies	Kgoro ya Matlotlo
Enquiries : Mr. SE Ntozini			
Ref No : DoF 14/6/1			

PROVINCIAL TREASURY CIRCULAR 4(b) OF 2014

TO

THE ACCOUNTING OFFICER: VOTE 1: OFFICE OF THE PREMIER (DR NONHLANHLA MKHIZE)
THE ACCOUNTING OFFICER: VOTE 3: FINANCE (MS NZ NKAMBA)
THE ACCOUNTING OFFICER: VOTE 4: COOPERATIVE GOVERNANCE AND TRADITIONAL AFFAIRS (MR D MAHLOBO)
THE ACCOUNTING OFFICER: VOTE 5: AGRICULTURE, RURAL DEVELOPMENT AND LAND ADMINISTRATION (MS NL SITHOLE)
THE ACCOUNTING OFFICER: VOTE 6: ECONOMIC DEVELOPMENT, ENVIRONMENT AND TOURISM (DR V DLAMINI)
THE ACCOUNTING OFFICER: VOTE 7: EDUCATION (MS MOC MHLABANE)
THE ACCOUNTING OFFICER: VOTE 8: PUBLIC WORKS, ROADS & TRANSPORT (MR KM MOHLASEDI)
THE ACCOUNTING OFFICER: VOTE 9: COMMUNITY SAFETY, SECURITY & LIAISON (MR W MTHOMBOTHU) (ACTING)
THE ACCOUNTING OFFICER: VOTE 10: HEALTH (DR JV DLAMINI)
THE ACCOUNTING OFFICER: VOTE 11: CULTURE, SPORT AND RECREATION (MS SP XULU)
THE ACCOUNTING OFFICER: VOTE 12: SOCIAL DEVELOPMENT (MS NL MLANGENI)
THE ACCOUNTING OFFICER: VOTE 13: HUMAN SETTLEMENTS (MR S MTSWENI)

THE CHIEF FINANCIAL OFFICER: VOTE 1: OFFICE OF THE PREMIER (MR KJ DLAMINI) (ACTING)
THE CHIEF FINANCIAL OFFICER: VOTE 3: FINANCE (MS L MLAMBO (ACTING))
THE CHIEF FINANCIAL OFFICER: VOTE 4: COOPERATIVE GOVERNANCE AND TRADITIONAL AFFAIRS (MR MD SHIPALANA)
THE CHIEF FINANCIAL OFFICER: VOTE 5: AGRICULTURE, RURAL DEVELOPMENT AND LAND ADMINISTRATION (MR C DLAMINI)
THE CHIEF FINANCIAL OFFICER: VOTE 6: ECONOMIC DEVELOPMENT, ENVIRONMENT AND TOURISM (MS J HLATSWAYO)
THE CHIEF FINANCIAL OFFICER: VOTE 7: EDUCATION (MR CB MNISI)
THE CHIEF FINANCIAL OFFICER: VOTE 8: PUBLIC WORKS, ROADS & TRANSPORT (MS H MDAKA (ACTING))

THE CHIEF FINANCIAL OFFICER: VOTE 9: COMMUNITY SAFETY, SECURITY & LIAISON
(MS SA SEFALA)

THE CHIEF FINANCIAL OFFICER: VOTE 10: HEALTH (MR VS MAKHUBEDU)

THE CHIEF FINANCIAL OFFICER: VOTE 11: CULTURE, SPORT AND RECREATION (MR T
NKOJOANA)

THE CHIEF FINANCIAL OFFICER: VOTE 12: SOCIAL DEVELOPMENT (MS P MORGAN)

THE CHIEF FINANCIAL OFFICER: VOTE 13: HUMAN SETTLEMENTS (MR SEB
MATSEBULA)

MPUMALANGA PROVINCE 2013/14 FINANCIAL YEAR END CLOSURE DATES


This serves to inform all Provincial Departments of the Financial Year End Closure dates for the
2013/14 Financial Year.

16th April 2014: Mpumalanga Province

30th April 2014: National Treasury

Please take note of the National Treasury Notice Number 5 of 2014: Guidelines for Financial
Year-End Closure dated 14February 2014.

Your cooperation will be highly appreciated


MS NZ NKAMBA
HEAD OF DEPARTMENT
DATE: 7/3/2014



national treasury

Department:
National Treasury
REPUBLIC OF SOUTH AFRICA

Enquiries: T.G. Kruger

Ref: SS25/00/6

Tel: (012) 657 4043

Fax: (012) 657 4020

Date: 14 February 2014

TO: BAS SYSTEM CONTROLLERS

NOTICE NUMBER 5 OF 2014

GUIDELINES FOR FINANCIAL YEAR-END CLOSURE: 2013/2014

1. The objective of this document is to provide Departments with a guideline for Financial Year-end closure.
2. The target date set by National Treasury (Refer to the Instruction Note 1 of 2014/2015) for the closure of the 2013/14 financial year is **30 April 2014**.
3. In order to comply with Paragraph 17.1 of the Treasury Regulations and Section 40(1) (a) of the PFMA, departments must timeously clear control (suspense) accounts and exceptions.
4. Year-end requests should be logged as soon as possible but not later than 12 working days before your proposed closure date, in order for requests to be prioritized and resolved before the force closure date.
5. The following checklist serves as a guidelines to assist departments to successfully close the **2013/14** financial year within the set target date:

General FYE Checklist		Tick box
All interface exceptions must be cleared before closing the year, especially category G deductions.		<input type="checkbox"/>
All control (suspense) accounts must be cleared prior to the financial year-end in accordance with the rules as per Annexure A.		<input type="checkbox"/>

All manual cheques and manual credit transfer must be captured and authorised before the financial year-end closure.	
Departments must timeously reconcile the bank statement balances with the bank balance according to the general ledger as at 31 March 2014.	
Departments must timeously ensure that ex-gratia payments and write-off transactions are properly approved and recorded. Debt write-off transactions cannot be captured after the financial year-end closure.	
Budget opening journals must be reconciled against the available budget.	
Exchequer releases (fund requisitions) must be reconciled and properly recorded.	
Ensure that all financial transactions on the Outstanding Transaction Report are cleared before the Financial year-end. Including duplicate interface payments that need to be authorised or cancelled.	
Settlement date for payments against the current financial year's budget must be no later than 31 March 2014 . Payments with a settlement (selected) date after 31 March 2014 will be posted in the new financial year (2014/2015).	
Prepare and forward financial year-end mappings for Donor-, Trading- and Trust Funds etc. to LOGIK Contact Center for capturing as per Annexure B no later than 20 March 2014 .	
Maintain parameter 241 with the group e-mail address to ensure that your error messages are being received at the LOGIK Contact Center.	
Clear all errors as per FYE-mail before the financial year-end. (See Annexure D for Solutions).	
BANK ADJUSTMENT ACC: DOM must only contain erroneous bank transactions.	
Ensure that all the Unpaid /Recalls have been cleared prior to closure.	

6. The following process should be followed for Financial Year End closure:

- ☐ Departments that are ready to close the financial year may do so any date before the Force Closure date;
- ☐ It is no longer necessary for Departments to log a request for BAS Business Support Team to have the Period Opening & Closing (POC) client bound to the department's database. All departments will be bound before the proposed closure date, and they can close when they are ready;
- ☐ It will no longer be necessary for departments to log a second request on the day of the financial year end closure indicating the time they are ready to close their financial year;
- ☐ A request can be logged if departments require assistance with the financial year end closure;
- ☐ The Departments that do not manage to close before **16h00** on **30 April 2014** will be force closed;
- ☐ Once the financial year end Trial Balances (totals on Fund 2, Item 3, Item 6 and Item 11) has been requested, there is no need to provide the request & user ids to the Business Support Team. Departments are responsible for requesting relevant Trial Balances that they will be used a day after the financial year end closure to ensure the year-end transactions posted correctly;

- It will no longer be necessary to bring all users down after a department has closed its financial year;
- Departments will no longer be required to send the sign off documents to the BAS LOGIK Contact Centre.

7. The following process should be followed after the Department has closed the Financial Year:

- The day after the Department has closed the financial year, reconciliation should be done between the "Immediate" (before image) and "Deferred" (after image) Trial Balances.

8. Final Audit

- Once the Auditor's report has been received and all adjustment journals (if applicable) have been captured, the Period Opening and Closing functionality in BAS must be used to finally close (audit closure) the financial year.

NB: - After the final closure, no further adjustment journals will be allowed.

- Departments must ensure that the Annual Financial Statement reconcile with the relevant account balances as per the BAS Trial Balance and other relevant reports.

9. The Departments must inform LOGIK Contact Centre of the proposed closure **dates from 14 March 2014**, as it will allow sufficient time to verify and assist departments that experience problems before and during final-closure.

Your co-operation in this regard will be appreciated.



JAN GILLILAND

DIRECTOR: OPERATIONS AND IMPLEMENTATION

DATE: 14/03/2014

ANNEXURE A

ACCOUNTS THAT MUST/ PREFERABLY HAVE A ZERO BALANCE AT FINANCIAL YEAR-END

Item (Description of Account)	Segment Detail Number	Period End Balance not Allowed	Must have a zero balance at year end	Preferably have a zero balance at year end
ALLOC INVALID CAN BEFORE DIST:CL	2858	N		X
BANK EXCEPTION ACC:DOM	3961	Y	X	
BAS CREDIT TRANSFERS:DOM	4194	N		X
BAS EBT CONTROL:DOM	4196	N		X
CANCEL CHEQUE/RE-ISSUE(PERS)	3911	N		X
CONVERSION FMS DEBT:CL	396	Y	X	
CONVERSION:ACCOUNT:CL	409	Y	X	
CONVERSION:BANK ACCOUNT:CL	378	Y	X	
CONVERSION:CHEQUES PAYABLE:CL	379	Y	X	
CONVERSION:DEBT:CL	397	Y	X	
CONVERSION:DEPOSIT ACCOUNT:CL	382	Y	X	
CONVERSION:EBT REJECTION ACC:CL	383	Y	X	
CONVERSION:EBT'S:CL	384	Y	X	
CONVERSION:EXCEPTION ACCOUNT:CL	385	Y	X	
CONVERSION:EXCHEQUER GRNT ACC:CL	386	Y	X	
CONVERSION:EXPENDITURE:CL	387	Y	X	
CONVERSION:GEN ACC FUND VOTE:CL	388	Y	X	
CONVERSION:M/F DIFFERENCE-ONE:CL	389	Y	X	
CONVERSION:M/F DIFFERENCE-TWO:CL	390	Y	X	
CONVERSION:OUTSTANDING PYMNTS:CL	391	Y	X	
CONVERSION:RECEIPT CONTROL:CL	392	Y	X	
CONVERSION:RECEIPT DEPOSIT CTRL:CL	393	Y	X	
CONVERSION:REVENUE ACCRUAL ACC:CL	394	Y	X	
CONVERSION:REVENUE:CL	395	Y	X	
CONVRT: RECEIPT PENDING CNTRL	404	Y	X	
CONVRT: UNPAID CHEQUE/RE-ISSUE	408	Y	X	
CONVRT:BANK ADJUSTMENT ACC:DOM	398	Y	X	
CONVRT:BAS CREDIT TRANSFERS:DOM	399	Y	X	
CONVRT:GRV DISCOUNT VARIANCE:CL	400	Y	X	
CONVRT:GRV OVERPAID VARIANCE:CL	401	Y	X	

Item (Description of Account)	Segment Detail Number	Period End Balance not Allowed	Must have a zero balance at year end	Preferably have a zero balance at year end
CONVRT:GRV SUSPENSE:CL	402	Y	X	
CONVRT:RECEIPT EXCEPTIONS:DOM	403	Y	X	
CONVRT:TEL ERRONEOU INTERF ACC:C	405	Y	X	
CONVRT:TEL EXCEPTION ACC:CL	406	Y	X	
CONVRT:UNP/RC BAS EBT CNTR ACC	407	Y	X	
CREDIT NOTE CANCELLATION:DOM	3008	N		X
DEBIT ORDER CONTROL ACCOUNT:CL	2871	N		X
DEBIT ORDER EXCEPTION ACCOUNT:CL	2873	N	X	
DEBIT ORDER TRANSFER ACC	3923	N		X
DEBT RECEIPT CONTROL:CA	2956	Y	X	
DEBT SUSPENSE:CA	2959	Y	X	
DEBT TRANSFER:CA	2960	Y	X	
DISALL DISHONOURED CHEQUES:CA	3856	N		X
DISALLOWANCE MISCELLANEOUS:CA	3857	N		X
EBT REJECTION ACC:DOM	3009	N		X
ERRONEOUS PERS CHEQUE CANCEL	3912	Y	X	
FUND REQUISITION ACCOUNT:DOM	1253	N		X
GRV DISCOUNT VARIANCE:CL	2859	Y	X	
GRV OVERPAID VARIANCE:CL	2860	Y	X	
GRV SUSPENSE:CL	2861	N		X
INTER RESPONS CLEARING ACC:CL	2875	Y	X	
PERSAL CREDIT TRANSFER:DOM	4195	N		X
PMG SCHEDULES:DOM	4193	N	X	
PRIVATE TELEPHONE:CA	3860	N		X
RECEIPT CONTROL ACCOUNT:DOM	3003	N		X
RECEIPT DEPOSIT CONTROL:DOM	3004	N		X
RECEIPT EXCEPTIONS:DOM	3005	Y	X	
RECEIPT PENDING CONTROL:DOM	3006	Y	X	
REVENUE ACCRUAL ACCOUNT:CL	371	Y	X	
SAL:DISALLOWANCE ACCOUNT:CA	3863	N		X
SAL:DUPLICATE EMPLOYEE CHEQUE:CA	3864	Y	X	
SAL:PERSAL EBT CONTROL ACC:DOM	4197	N		X
SAL:PERSAL INTERFACE CONTROL:CL	3847	Y	X	
SAL:PERSAL TRANSFER CONTROL:CL	3848	Y	X	
SAL:REVERSAL CONTROL:CA	3865	N		X

TELEPHONE CONTROL ACC:CL	2877	N		X
TELEPHONE ERRONEOU INTERF ACC:CL	2878	N		X
TELEPHONE EXCEPTION ACC:CL	2879	Y	X	
THIRD PARTY TRANSPORT CONTR ACC	3925	N		X
THIRD PARTY TRN ERRONEOUS ACC:CL	2864	N		X
THIRD PARTY TRN EXCEPTION ACC:CL	2865	Y	X	
TRANSPORT EXCEPTION ACCOUNT:CL	2866	Y	X	
TRANSPORT INTERFACE CONTR ACC:CL	2867	N		X
TRANSPORT PAYMENT SUSPENSE:CL	2868	N		X
UNALLOCATED CANCEL RECEIPTS:DOM	3007	Y	X	
UNP:RC BAS EBT CNTR ACC:DOM	3010	N		X
UNPAID CHEQUE RE-ISSUE	3913	N		X

ANNEXURE B
Donor, Trading, Trust Funds, Cara, Direct Exchequer

Example of year-end mappings

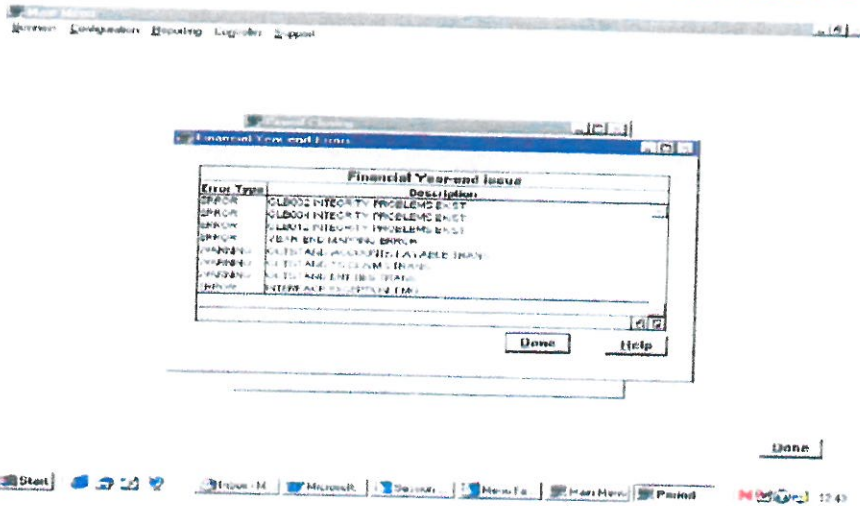
T/TYPE DESCRIPTION	T/TYPE	IN D	FUND	ITEM	IN D	INFRAS TRUCTURE	FUND	RESP	OBJECTIVE	PROJECT	ITEM	ASSETS	REGION IDENTIFIER
TOTAL AMOUNT OF VOTE FUND	PO001	DR	GEN ACC OF THE DEPT VOTE	GEN ACC OF FUND VOTE	CR	GEN ACC OF VOTE	GEN ACC OF THE DONOR EXP	CONTROL. RESP.	GEN ACC REV/EXP	NO PRJ:STND A GEN ACC OF DONOR EXP	EXCHEQUER GRANT ACC CL	NON-ASSETS RELATED	NON EXP:NO REGIONAL IDENTIFIER
TOTAL AMOUNT OF VOTE FUND	PO001	DR	GEN ACC OF THE DONOR FUND	GEN ACC OF FUND/VOTE	CR	GEN ACC DONOR EXP	GEN ACC OF THE DONOR EXP	CONTROL. RESP.	GEN ACC REV/EXP	NO PRJ:STND A GEN ACC OF DONOR EXP	EXCHEQUER GRANT ACC CL	NON-ASSETS RELATED	NON EXP:NO REGIONAL IDENTIFIER
TOTAL AMOUNT OF VOTE FUND	PO001	DR	GEN ACC OF THE TRADING FUND	GEN ACC OF FUND VOTE	CR	GEN ACC TRADE EXP	GEN ACC OF THE TRADING FUND:EXP	CONTROL. RESP.	GEN ACC REV/EXP	NO PRJ:STND A GEN ACC TRADE EXP	EXCHEQUER GRANT ACC CL	NON-ASSETS RELATED	NON EXP:NO REGIONAL IDENTIFIER
TOTAL AMOUNT OF VOTE FUND	PO001	DR	GEN ACC OF THE TRUST FUND	GEN ACC OF FUND/VOTE	CR	GEN ACC TRUST EXP	GEN ACC OF THE TRUST FUND	CONTROL. RESP.	GEN ACC REV/EXP	NO PRJ:STND A GEN ACC TRUST EXP	EXCHEQUER GRANT ACC CL	NON-ASSETS RELATED	NON EXP:NO REGIONAL IDENTIFIER
TOTAL AMOUNT OF VOTE FUND	PO001	DR	GEN ACC OF CARA EXPENDITURE	GEN ACC OF FUND/VOTE	CR	GEN ACC CARA EXP	GEN ACC OF CARA EXP	CONTROL. RESP.	GEN ACC REV/EXP	NO PRJ:STND A GEN ACC CARA EXP	EXCHEQUER GRANT ACC CL	NON-ASSETS RELATED	NON EXP:NO REGIONAL IDENTIFIER
TOTAL AMOUNT OF EXP INCURRED	PO002	CR	VOTED FUNDS EXPENDITURE		DR	GEN ACC OF VOTE	GEN ACC OF THE DONOR FUND	CONTROL. RESP.	GEN ACC REV/EXP	NO PRJ:STND A GEN ACC OF DONOR EXP	EXCHEQUER GRANT ACC CL	NON-ASSETS RELATED	NON EXP:NO REGIONAL IDENTIFIER
TOTAL AMOUNT OF EXP INCURRED	PO002	CR	DONOR FUND EXPENDITURE		DR	GEN ACC DONOR EXP	GEN ACC OF THE DONOR FUND	CONTROL. RESP.	GEN ACC REV/EXP	NO PRJ:STND A GEN ACC OF DONOR EXP	EXCHEQUER GRANT ACC CL	NON-ASSETS RELATED	NON EXP:NO REGIONAL IDENTIFIER
TOTAL AMOUNT OF EXP INCURRED	PO002	CR	TRADING FUND EXPENDITURE		DR	GEN ACC TRADE EXP	GEN ACC OF THE TRADING FUND	CONTROL. RESP.	GEN ACC REV/EXP	NO PRJ:STND A GEN ACC TRADE EXP	EXCHEQUER GRANT ACC CL	NON-ASSETS RELATED	NON EXP:NO REGIONAL IDENTIFIER
TOTAL AMOUNT OF EXP INCURRED	PO002	CR	TRUST FUND EXPENDITURE		DR	GEN ACC TRUST EXP	GEN ACC OF THE TRUST FUND	CONTROL. RESP.	GEN ACC REV/EXP	NO PRJ:STND A GEN ACC TRUST EXP	EXCHEQUER GRANT ACC CL	NON-ASSETS RELATED	NON EXP:NO REGIONAL IDENTIFIER
TOTAL AMOUNT OF EXP INCURRED	PO002	CR	CARA FUNDS EXP		DR	GEN ACC CARA EXP	GEN ACC OF CARA EXPENDITURE	CONTROL. RESP.	GEN ACC REV/EXP	NO PRJ:STND A GEN ACC CARA EXP	EXCHEQUER GRANT ACC CL	NON-ASSETS RELATED	NON EXP:NO REGIONAL IDENTIFIER

CREDIT BALANCE OF REVENUE	PO003	DR	TRADING REVENUE	CR	GEN ACC TRADE REC	GEN ACC OF THE TRADING REVENUE	CONTROL. RESP.	GEN ACC REV/EXP	NO PRJ:STND/A GEN ACC OF TRADE REV	REVENUE ACCRUAL ACC CL	NON-ASSETS RELATED	NON EXP:NO REGIONAL IDENTIFIER
CREDIT BALANCE OF REVENUE	PO003	DR	TRUST REVENUE	CR	GEN ACC TRUST REC	GEN ACC OF THE TRUST REVENUE	CONTROL. RESP.	GEN ACC REV/EXP	NO PRJ:STND/A GEN ACC TRUST REV	REVENUE ACCRUAL ACC CL	NON-ASSETS RELATED	NON EXP:NO REGIONAL IDENTIFIER
DR BAL GEN ACC OF REVENUE	PO005	CR	GEN ACC OF THE TRADING REVENUE	DR	GEN ACC TRADE REC	GEN ACC OF THE TRADING REVENUE	CONTROL. RESP.	GEN ACC REV/EXP	NO PRJ:STND/A GEN ACC OF TRADE REV	REVENUE ACCRUAL ACC CL	NON-ASSETS RELATED	NON EXP:NO REGIONAL IDENTIFIER
DR BAL GEN ACC OF REVENUE	PO005	CR	GEN ACC OF THE TRUST REVENUE	DR	GEN ACC TRUST REC	GEN ACC OF THE TRUST REVENUE	CONTROL. RESP.	GEN ACC REV/EXP	NO PRJ:STND/A GEN ACC TRUST REV	REVENUE ACCRUAL ACC CL	NON-ASSETS RELATED	NON EXP:NO REGIONAL IDENTIFIER
DR BAL GEN ACC OF REVENUE	PO005	CR	GEN ACC OF THE DIR EXCHEQUE R REV	DR	GEN ACC OF REC	GEN ACC OF THE DIR EXCHEQUE R REV	CONTROL. RESP.	GEN ACC REV/EXP	NO PRJ:STND/A GEN ACC DIR EXCH REV	REVENUE ACCRUAL ACC CL	NON-ASSETS RELATED	NON EXP:NO REGIONAL IDENTIFIER

Financial Year-End Errors

Financial year-end Errors window:

The type can be an Error or a Warning. The users will however be able to close the financial year when the error type contains only warnings. The errors are critical and should be fixed to ensure a successful closure but the warnings are for the user's attention and they must decide if the warnings will be dealt with before continuing with closure. The batch, that encountered the error, must be rerun when the users resolved the errors.



FIELD/BUTTON	DESCRIPTION
Error Type	This indicates the severity of the error. Warnings will not prevent users to close the financial year but all the Error type issues will.
Description	Meaningful description of the issue encountered which will indicate to the user where the problem is.
<Done>	Clicking <Done> will close the Financial year-end errors window and return to the Period Closing window.

Attached as **Annexure D** is a list that provides explanations of the various errors/warnings that can be encountered together with a possible solution of solving the problem and the relevant e-mail message that will be sent.

ANNEXURE D – FYE ERROR SOLUTIONS

DESCRIPTION TO BE DISPLAYED	E-MAIL MESSAGE	TYPE	SOLUTION
1 Period End Balances exist	Found Accounts with balances where balance should be zero	Error	Accounts not allowed to have a balance currently have a non-zero balance. Accounts with a Period end balance indicator of 'Y' should have a zero-balance when closing. Request Matching/ Detail report to investigate and resolve.
2 Accounting types problem	Found Item accounting types with spaces on posting levels	Error	Expense, Income and Ledger item accounts do not have the correct accounting type. (Note: Will be eliminated with GFS).
3 Open-Close Parameter error	There are Period Open-Close parameters that were not captured	Error	Year-end parameters are missing / incorrect. Ensure that Period Open and Close parameters were captured correctly. This will include system parameters, definition codes 16 (transaction types) and 184 (Financial year-end), Departmental parameters 185 (year-end segment type mappings from) and 186 (year-end segment type mappings to).
4 Year-end Mapping error	Missing mappings in YRENDMAP table. Further validations for mappings stopped.	Error	This error indicates that some mappings are still outstanding. This can be e.g. a PO001 or PO003 missing for a PO002 mapping. The particulars can be obtained from User support team since it is currently written to an output file. Remember a call must be logged before User support can provide the information. Only captured mappings will be validated.
5 Matching field balance error	Found matching fields that are not in sync	Error	Item transactions exist without matching fields. A call must be logged before User support can provide further information.
6 Outstand General Journal Trans	Warning: Found outstanding General Journal transactions	Warning	Journal transactions still to be processed exist.
7 Outstand Accounts Payable Trans	Warning: Found outstanding Payment transactions	Warning	Accounts Payable payments captured that still need to be processed for current financial year.
8 Outstand Disbursement Trans	Warning: Found outstanding Disbursement transactions	Warning	Some disbursements still need to be processed for the current year. Ensure that all rejected disbursements have been resolved either cancelled or reissued. Reissued disbursements must first be processed by the relevant batch before completed.
9 Outstand Receipts Trans	Warning: Found outstanding Receipt transactions	Error	Pending receipts may still exist.
10 Outstand Batch/Rec Deposit Trans	Warning: Found outstanding Batch/Receipt batch transactions	Error	Batches exist for which a deposit confirmation is still outstanding.
11 Outstand Deposit Trans	Warning: Found outstanding Deposit transactions	Error	Deposits exist for which a deposit confirmation is still outstanding.
12 Outstand T&S Advances Trans	Warning: Found outstanding T&S	Warning	Advances exist that still need to be processed for the current financial year.

13	Outstand T&S Claims Trans	Advances transactions Warning: Found outstanding I&S Claims transactions	Warning	Claims exist that still need to be processed for the current financial year.
14	Outstand T&S Matches Trans	Warning: Found outstanding I&S	Warning	Matches exist that still need to be processed for the current financial year.
15	Outstand Debt Agreement Trans	Warning: Found outstanding Debt Agreement transactions	Warning	Debt agreement transactions still exist that must be finalised. Debts that were captured or rejected and not yet authorised.
16	Outstand Debt Trans	Warning: Found outstanding Debt transactions	Warning	Captured or rejected debt transactions still to be authorised.
17	Outstand Entities Trans	Warning: Found outstanding Entities transactions	Warning	Entities captured that must be authorised or processed.
18	Interface Exception: PERSAL	Interface Error: PERSAL Exception count: 40	Error	Resolve exceptions outstanding.
19	Interface Exception: ACB	Interface Error: ACB Payments Exception count: 2	Warning	Resolve exceptions outstanding.
20	Interface Exception: ACBEF7	Interface Error: Recall and Unpaid Payments Exception count: 43	Warning	Resolve exceptions outstanding.
21	Interface Exception: JOURNAL	E.G. Interface Error: GEIS Journals Exception count: 20	Error	Resolve exceptions outstanding.
22	Interface Exception: PAYMENT	E.g. Interface Error: Finest Payments Exception count: 1808	Error	Resolve exceptions outstanding. The type of payment will be displayed in the e-mail message with an exception count.
23	Interface Exception: PMG	E.g. Interface Error: Pay Master General Exception count: 40	Error	Resolve exceptions outstanding.
24	Interface Exception: TELKOM	Interface Error: Telkom Exception count: 90	Error	Resolve exceptions outstanding.
25	Interface Exception: OTHER		Warning	This will involve exceptions not catered for in the other interface types. (This will only be used if a new interface type was introduced and no code changes have been performed to include the new interface type).
26	Interface Exception: RECEIPT		Error	Resolve exceptions outstanding.
27	Account Type Error: EXPENSE	Found Account type error for Expense Accounts	Error	Ensure that all expense items contain the correct account type of 'E'. User Support would be able to provide the relevant item numbers.
28	Account Type Error: REVENUE	Found Account type error for Revenue Accounts	Error	Ensure that all expense items contain the correct account type of 'P'. User Support would be able to provide the relevant item numbers.
29	Account Type Error: LEDGER	Found Account type error for Ledger Accounts	Error	Ensure that all expense items contain the correct account type of 'L'/'A'. User Support would be able to provide the relevant item numbers.
30	Susp/M/Ind error: EXPENSE	Warning: Found incorrect Suspense/Matching field IND for expense accounts.	Warning	Incorrect Suspense & Matching field indicators. Ensure that for the specific account type these indicators correspond.

31	Susp/Mfndind error: REVENUE	Warning: Found incorrect Suspense/Matching field IND for revenue accounts.	Warning	Incorrect Suspense & Matching field indicators.
32	Susp/Mfndind error: LEDGER	Warning: Found incorrect Suspense/Matching field IND for ledger accounts.	Warning	Incorrect Suspense & Matching field indicators.
	The following mail are not specifically linked to the error parameters, therefore these messages will not be displayed on the on-line client:			
Code Structure:				
33		Parameters for code structure accounts not found.		The code structure account values were not found in the Parcdvfl table for Defno 238. No further validations are performed for the code structure.
34		Varsno parameter for code structure parent level not found.		The parent level definition was not found in the Parvardf table for Defno 238. No further validations are performed for the code structure.
35		Varsno parameter for code structure account type not found.		The account type definition was not found in the Parvardf table for Defno 238.
36		Expenditure: SDNO 1055 invalid! <i>NOTE: The Account name and SDNO will change, depending on which account was not found.</i>		No further validations are performed for the code structure. The parent account SDNO value was captured incorrectly for Defno 238.
37		Parent SDNO for Seqno 2, Varsno 1 not found. <i>NOTE: the Seqno will change, depending on which SDNO was not found.</i>		The parent account SDNO value was not found for Defno 238.
38		Account type value parameter for EXPENDITURE not found. <i>NOTE: the account name will change, depending on which account was not found.</i>		The account type for the parent account was not found for Defno 238.
Mappings:				
39		Mapping error: Missing PO002/PO005 mapping for PO003.		There are PO003 Items in the YRENDMAP table that does not have a mapping for PO002 or PO005.
40		Mapping error: Missing PO002 mapping for PO001.		There are PO001 Items in the YRENDMAP table that does not have a mapping for PO002.
41		Mapping error: Missing PO003 mapping for PO005.		There are PO005 Items in the YRENDMAP table that does not have a mapping for PO003.
42		Mapping error: Missing		There are PO002 Items in the YRENDMAP table that does not have a

		PO001/PO003 mapping for PO002.		mapping for PO001 or PO003.
43		Mapping error: Fund(s) without mappings for expenses (PO002).		There is expense items in the YRENDMAP table that does not have mappings for Fund.
44		Mapping error: Fund(s) without mappings for income (PO003).		There is income items in the YRENDMAP table that does not have mappings for Fund.