



MEC MMATHULARE COLEMAN



finance

DEPARTMENT: FINANCE
MPUMALANGA
PROVINCIAL GOVERNMENT

MPUMALANGA'S BUDGET OF HOPE: TO FIGHT POVERTY AND IMPROVE SERVICE DELIVERY.

KEY FUNDED PRIORITY AREAS: 2006/2007

Education

- Quality and upliftment programmes
- Education Management Information Systems
- Expansion of Grade R
- HR Systems Development and Teacher Development
- Implementation of National Curriculum Statement
- Implementation of Revised Norms and Standards for School Funding (No-fees schools)
- Special Schools
- Intergrated Plan for Early Childhood Development -EPWP

Health

- Emergency Medical Services
- Human resources
- Modernisation of tertiary services
- Information Systems
- Community Health Workers -EPWP

Social Services

- Implementation of new social welfare legislation
- Expansion of social welfare services
- Home/Community Based Care -EPWP

Economic Services

- The maintenance and rehabilitation of provincial roads
- Agriculture - rural development and food security
- Tourism - job creation and economic growth

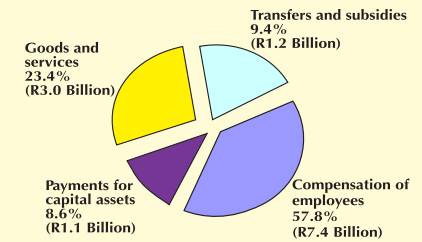
ALLOCATION PER DEPARTMENT/VOTE

Department/Vote	Amount Allocated
Office of the Premier	R148, 779 Million
Provincial Legislature	R111,824 Million
Department of Finance	R133, 741 Million
Local Govt & Housing	R625,770 Million
Agriculture & Land Administration	R631,736 Million
Economic Dev & Planing	R200,257 Million
Education	R6,218 Billion
Public Works	R295,193 Million
Safety & Security	R41,724 Million
Health	R2,912 Billion
Roads & Transport	R961,821 Million
Culture, Sports & Recreation	R93, 604 Million
Social Services	R430,279 Million
TOTAL	R12,805 Billion

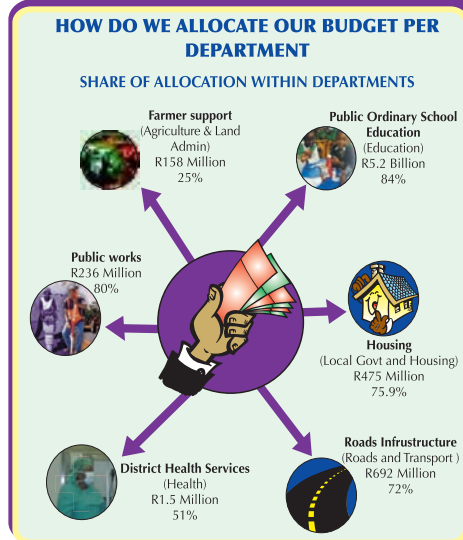
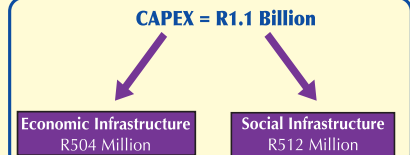


HOW DO WE ALLOCATE OUR BUDGET

Breakdown by major spending items



TOTAL BUDGET = R12.8 Billion



PAYMENT FOR CAPITAL ASSETS

Department	2005/06	% of Dept over total allocation
Education	R278 Million	25%
Health	R217 Million	20%
Social Services	R16 Million	1.5%
Local Govt & Housing	R19.6 Million	1.8%
Agriculture & Land Administration	R114 Million	10.4%
Public Works	R12 Million	1.1%
Roads & Transport	R394 Million	35.8%
Other	R55 Million	5%
TOTAL	R1.1 Billion	100%

"Always Stretching Our Arm, to Accelerate Service Delivery"